




Legend

-  District Boundary
-  Sites of Special Scientific Interest
-  Hydro Sites

File name 1017 Planning for Climate Change
 Version 1.0
 Date April 2008

Drawing title:
 Hydro sites for
 Hinckley and Bosworth
 Borough Council

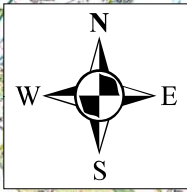
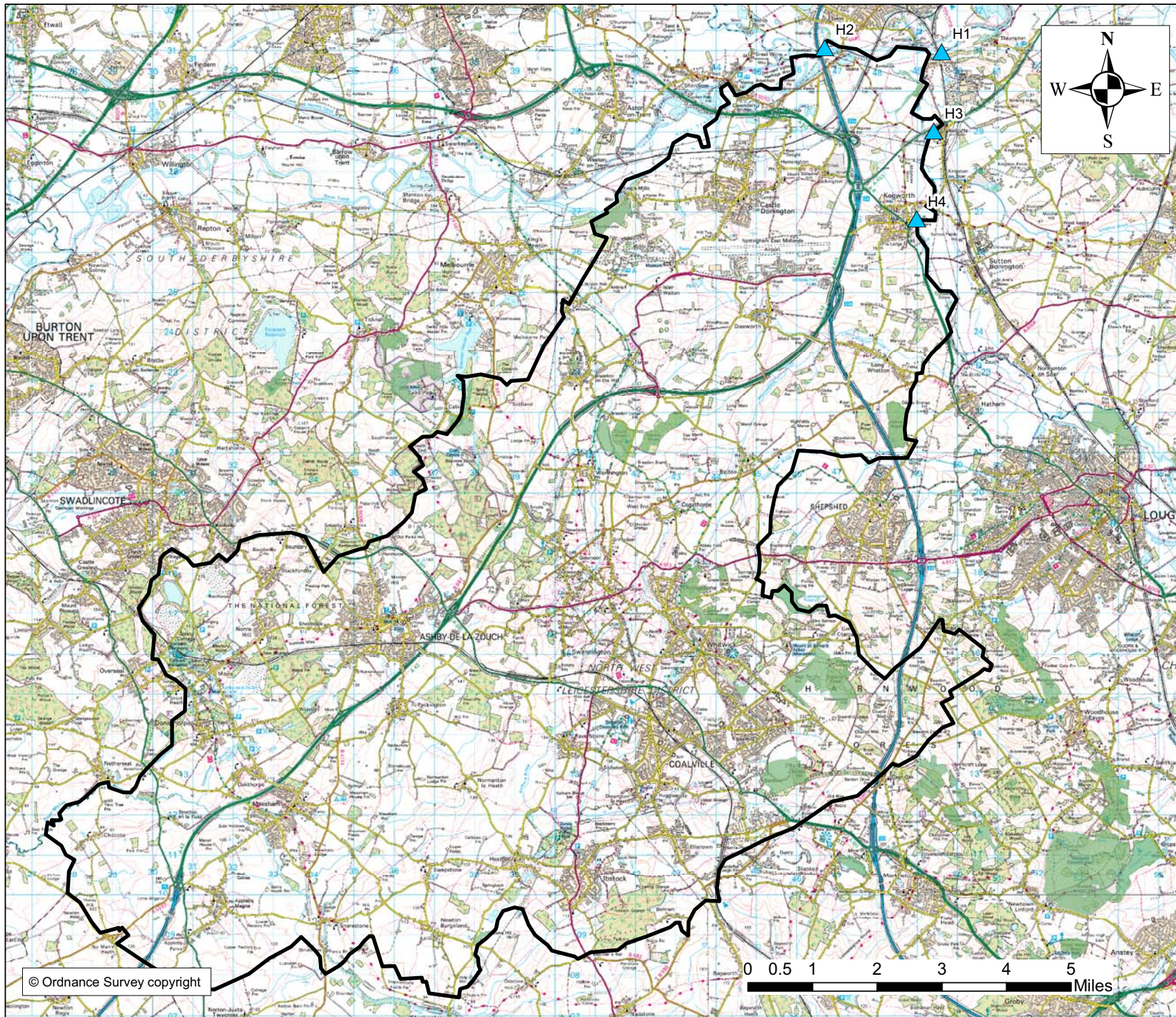


IT Power, Grove House,
 Lutyens Close,
 Chineham, Hants.
 RG24 8AG, UK
 itpower@itpower.co.uk
 Tel. +44 1256 392700
 Fax. +44 1256 392701



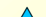
© IT Power copyright 2008

© Ordnance Survey copyright

0 0.5 1 2 3 4 5 Miles



Legend

-  Council Boundaries
-  Sites of Special Scientific Interest
-  Hydro Sites

File name 1017 Planning for Climate Change
 Version 1.0
 Date April 2008

Drawing title:

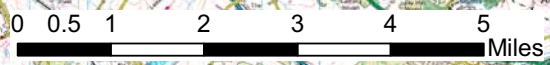
Hydro sites considered
 North West Leicestershire District Council

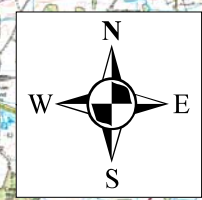
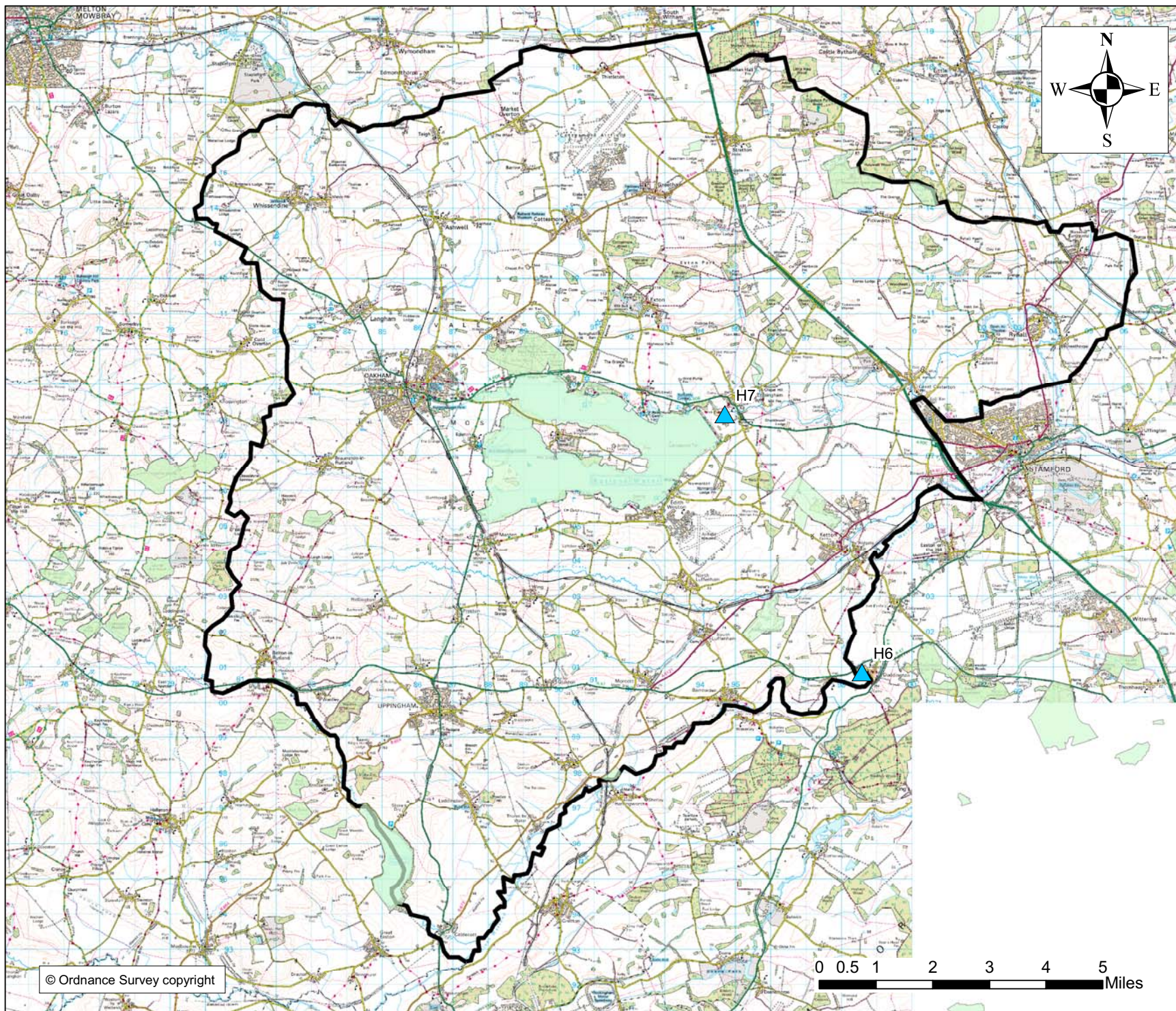





IT Power, Grove House,
 Lutyens Close,
 Chineham, Hants.
 RG24 8AG, UK
 itpower@itpower.co.uk
 Tel. +44 1256 392700
 Fax. +44 1256 392701

© IT Power copyright 2008

© Ordnance Survey copyright





- Legend**
-  Council Boundaries
 -  Sites of Special Scientific Interest
 -  Hydro Sites

File name 1017 Planning for Climate Change
 Version 1.0
 Date April 2008

Drawing title:
 Hydro sites
 considered for
 Rutland District Council



IT Power, Grove House,
 Lutyens Close,
 Chineham, Hants.
 RG24 8AG, UK
 itpower@itpower.co.uk
 Tel. +44 1256 392700
 Fax. +44 1256 392701

© IT Power copyright 2008

© Ordnance Survey copyright

