



FIELDS OS 6700 6722 AND 5200 MUSTON LANE, EASTHORPE -

LPA ref: 22/00537/FUL

PINS ref: APP/Y2430/W/24/3340258

Appendix 2 to Proof of Evidence of  
Simon Higson BA (Hons), MA, CMLI

Prepared for Melton Borough Council  
and



August 2024

Felstone Consulting Limited

Email: [contact@felstoneconsulting.co.uk](mailto:contact@felstoneconsulting.co.uk) Web: [www.felstoneconsulting.co.uk](http://www.felstoneconsulting.co.uk)

Registered Office: 3 Princes Court, Royal Way, Loughborough, LE11 5XR. Company Registration Number: 14177017

## FOREWORD

This Appendix 2 to S. Higson's Proof of Evidence presents Mr Higson's marked-up LVIA figures.

The base images were taken from other publications (as referenced) and have not been scaled within this document.

## LIST OF FIGURES

Figure SH-1 – Screenshot from Multi-Agency Geographic Information (MAGIC) - with my mark up of the Appeal Site location

Figure SH-2 – Map 8 Views of Borough wide importance across Bottesford Parish from Neighbourhood Plan – with my mark up of Appeal Site location

Figure SH-3 – Map 9a Key Views from Neighbourhood Plan – with my mark up of Appeal Site location

Figure SH-4 – Melton Borough Council Landscape Character Assessment 2006 – with my mark up of Appeal Site location

Figure SH-5 – Melton Borough Council Belvoir Solar Farms

Figure SH-6 – Pegasus' Cumulative Local Landscape Character Plan, with my mark up of the 'Vale' around Bottesford – Local LCC

Figure SH-7 – Character View included on page 12 of the National Character Area 48 Trent and Belvoir Vales (at Longore Bridge)

Figure SH-8 – Character View included on page 15 of the National Character Area 48 Trent and Belvoir Vales

Figure SH-9 – S.Higson's Context Photographs Locations

Figure SH-10 – S.Higson's Mark up of Pegasus' Heritage Viewpoint 10

Figure SH-11 – S.Higson's Mark up of Pegasus' Cumulative Assessment Viewpoint 8D

Figure SH-12 – S.Higson's Mark up of Pegasus' Cumulative Assessment Viewpoint 7

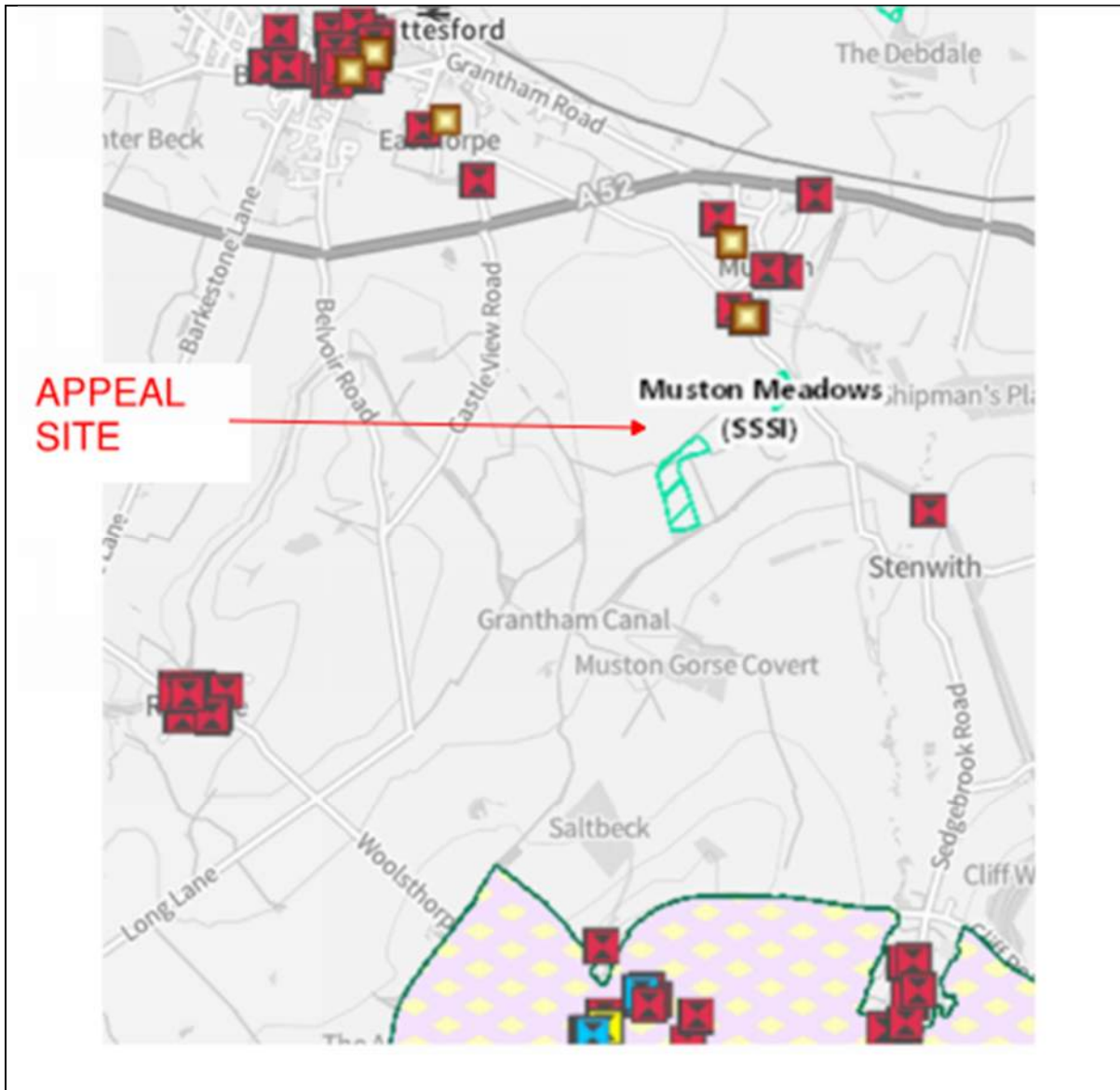
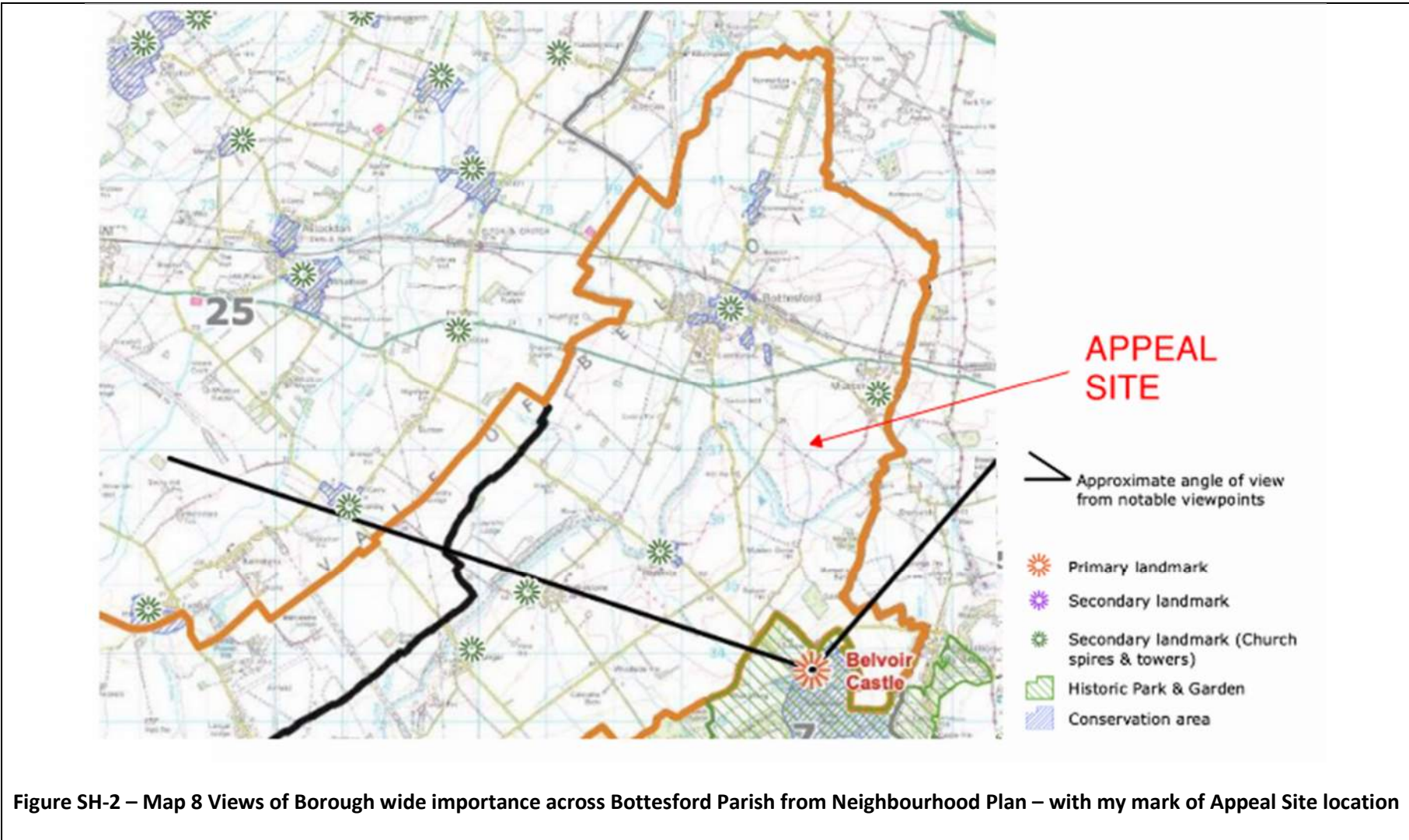


Figure SH-1 – Screenshot from Multi-Agency Geographic Information (MAGIC) - with my mark up of the Appeal Site



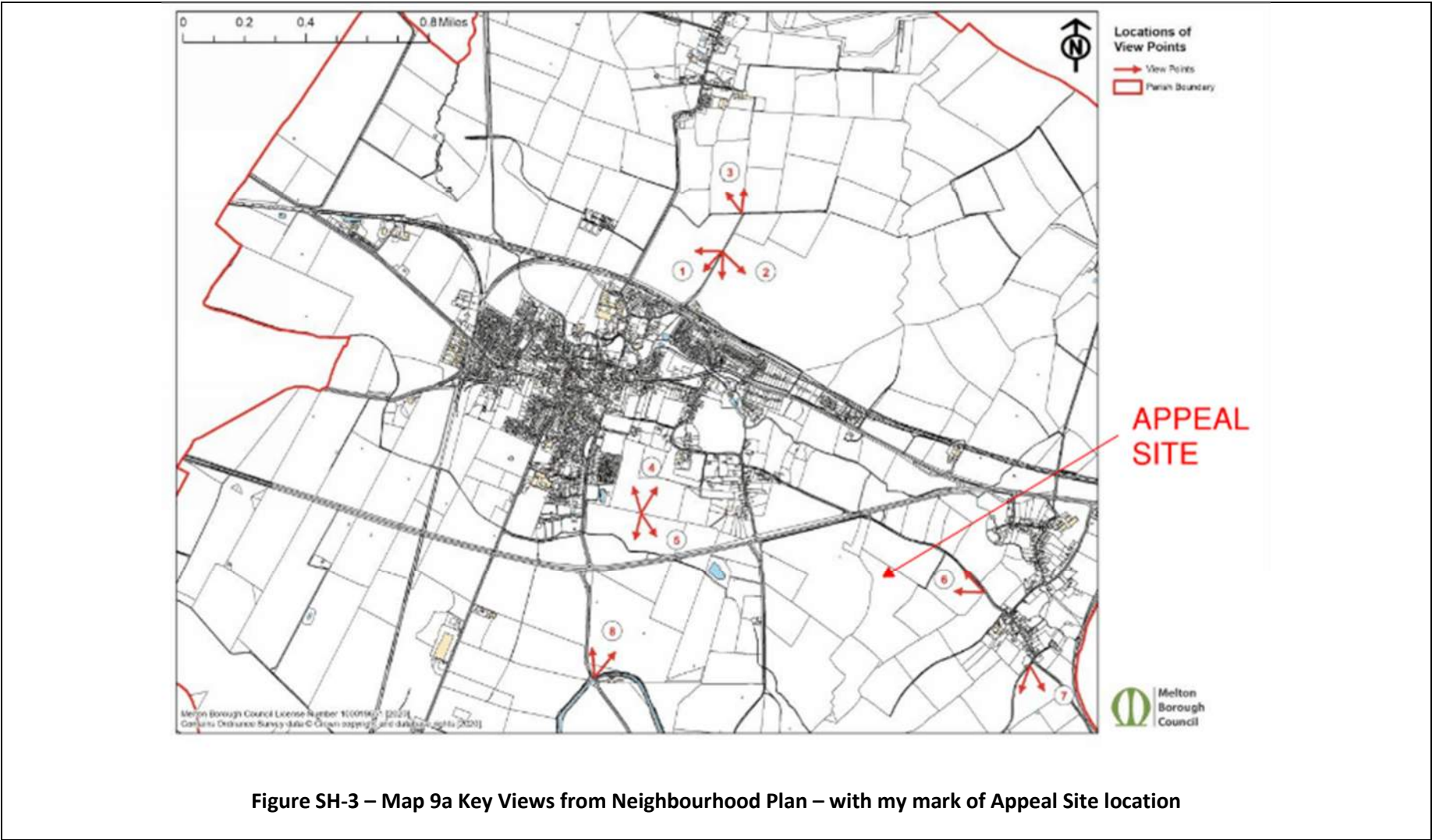
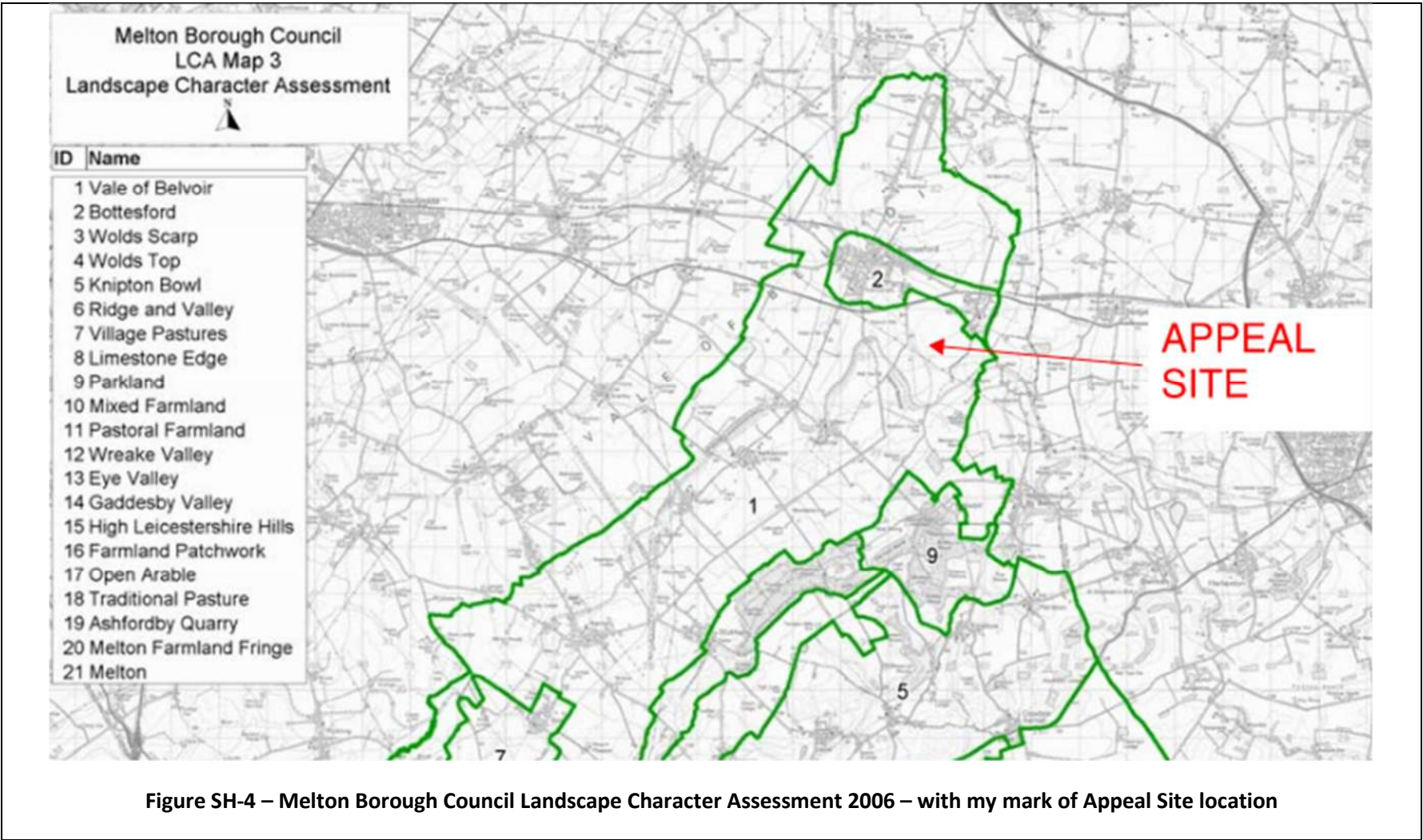
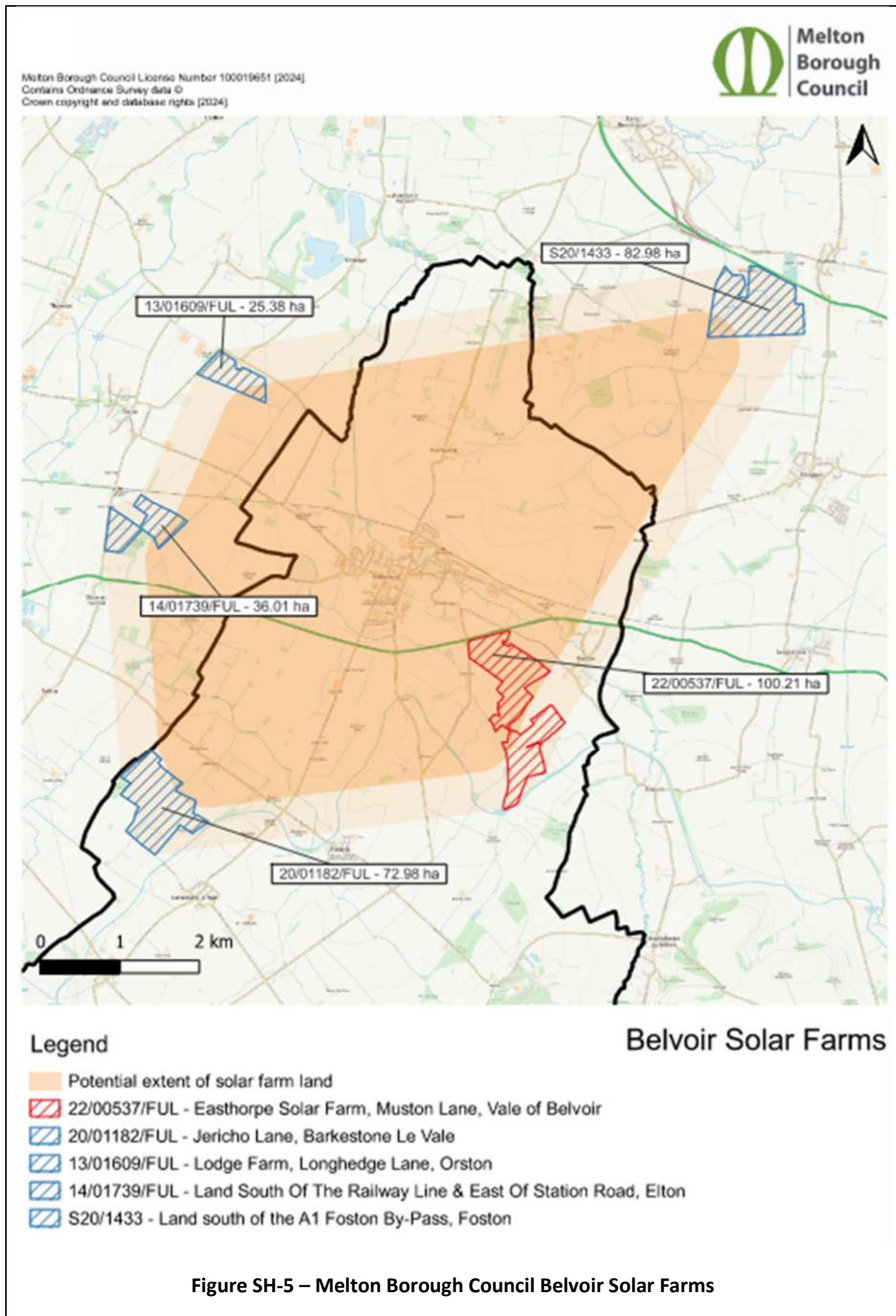
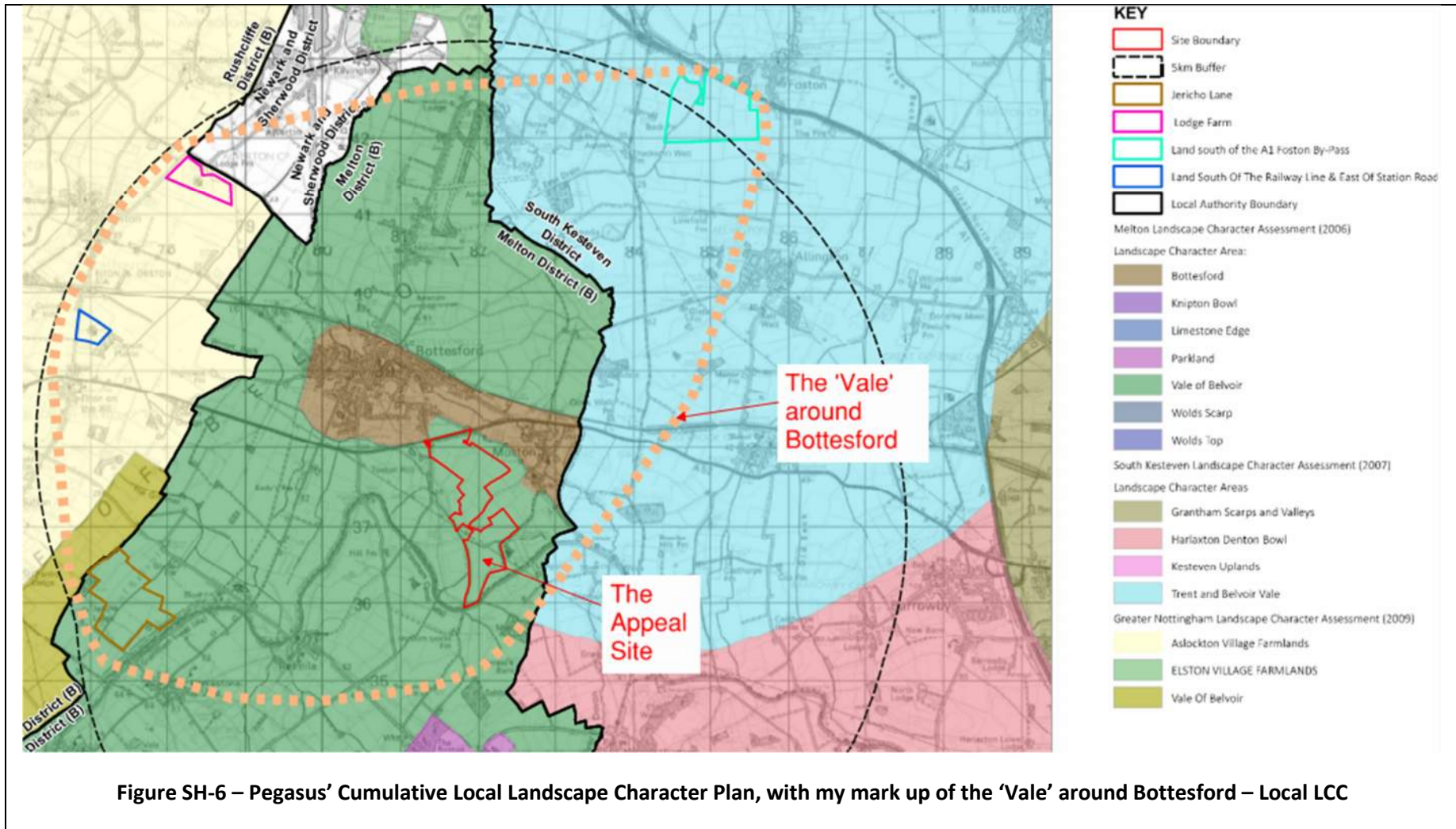


Figure SH-3 – Map 9a Key Views from Neighbourhood Plan – with my mark of Appeal Site location









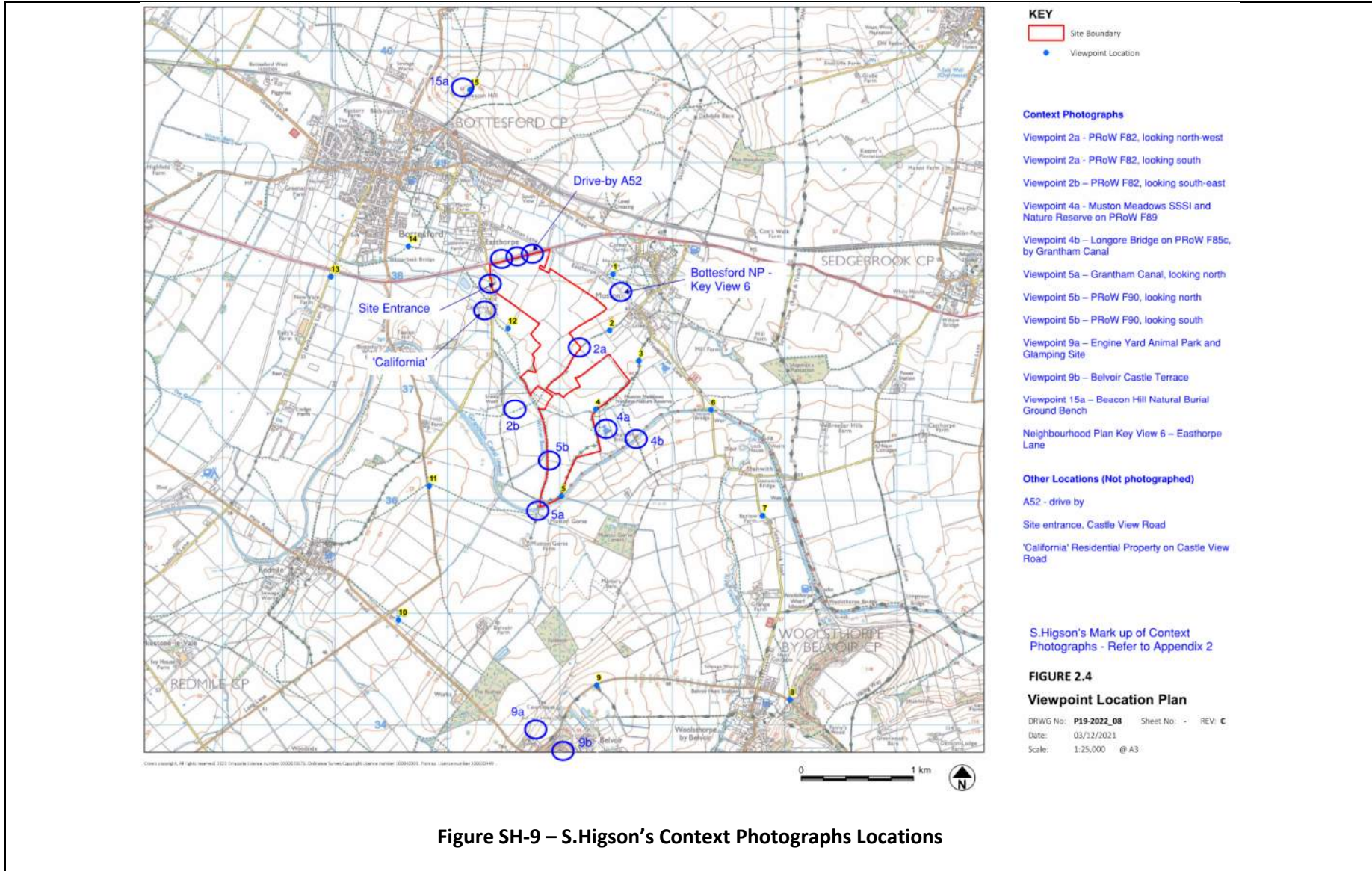


The Grantham Canal alongside the remnant flower-rich meadow land of Muston Meadows National Nature Reserve which contains medieval ridge and furrow cultivation features. The canal was built primarily to transport energy in the form of coal from Nottingham. Nowadays energy is transported across it via modern electricity pylons.

**Figure SH-7 – Character View included on page 12 of the National Character Area 48 Trent and Belvoir Vales (at Longore Bridge)**



**Figure SH-8 – Character View included on page 15 of the National Character Area 48 Trent and Belvoir Vales**





**Figure SH-10 – S.Higson’s Mark up of Pegasus’ Heritage Viewpoint 10**



**CUMULATIVE ASSESSMENT VIEWPOINT 8D**

(LVIA Viewpoint 15): From PRoW bridleway F86a/2, Beacon Hill viewing point

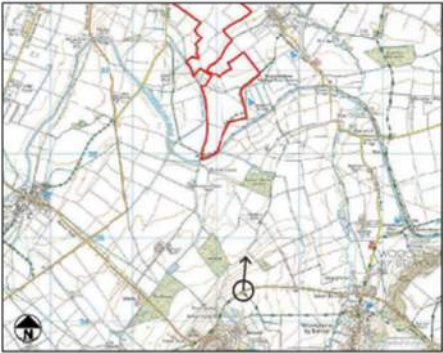


- KEY
- Proposed site
  - Jericho Lane
  - Lodge Farm
  - Land South Of The A1 Foston By-Pass
  - Land South of the Railway Line & East of Station Road
- All indicated extents of cumulative solar developments are approximate

Figure SH-11 – S.Higson’s Mark up of Pegasus’ Cumulative Assessment Viewpoint 8D



**CUMULATIVE ASSESSMENT VIEWPOINT 7B**  
(LVIA Viewpoint 9): Sequential view from the Jubilee Way long distance path



- KEY**
- Proposed site
  - Jericho Lane
  - Lodge Farm
  - Land South Of The A1 Foston By-Pass
  - Land South of the Railway Line & East of Station Road
- All indicated extents of cumulative solar developments are approximate



**Figure SH-12 – S.Higson’s Mark up of Pegasus’ Cumulative Assessment Viewpoint 7**

FELSTONE  
CONSULTING  
CHARTERED LANDSCAPE ARCHITECTS

Felstone Consulting Limited

Email: [contact@felstoneconsulting.co.uk](mailto:contact@felstoneconsulting.co.uk) Web: [www.felstoneconsulting.co.uk](http://www.felstoneconsulting.co.uk)

Registered Office: 3 Princes Court, Royal Way, Loughborough, LE11 5XR. Company Registration Number: 14177017